



# Royal Swiss Medicine

PRODUCT CATALOG



# ABOUT COMPANY:



According to Henry Ford

*"if everyone is moving forward together, then success takes care of itself".*

Inspired by nature, manufactured for the people by industry specialists Royal Swiss Medicine delivers high-quality products that are the result of long-standing cooperation between scientists, engineers and doctors of these companies, who apply cutting-edge research techniques in order to create unique natural products.

**WE ARE A RESEARCH AND DEVELOPMENT COMPANY TACKLING NATURE'S SECRETS  
RELATED TO AGING AND EXTENSION OF HUMAN HEALTHSPAN**

**THE BASIS OF OUR INNOVATION IS THE WISDOM, STRENGTH AND BEAUTY OF NATURE**

Our specialization is based in longevity technologies and novel products created from natural ingredients. We believe ourselves to be a smart brand as we have realized that it is customers who control whether a product performs successfully on the market. Thus we have brought joint intelligence and co-created innovative health product line from natural ingredients in order to guarantee highest possible quality and excellence to satisfy our customers' needs.

We are unique in that we are the only conifer tree biomass processing company in Europe. Our know-how is the extraction, work-up and fractionation of lipophylic extracts from non-timber forest biomass.

Royal Swiss Medicine carries out research in collaboration with universities and scientific institutes to discover natural compounds that target and discard aging cells from the body, making way for the production of new, healthy cells. Cellular senescence is an underlying contributor to accelerated aging and disease. These accumulated cells pour out harmful, pro-inflammatory chemicals and other signaling molecules that contribute to aging and increase the risk of most age-related diseases—including cancer.

Ridding the body of these aging cells to make way for fresh new cells is an important target for slowing aging and reducing disease risk. This is one of the main goals of RSM as we develop new natural products to purge senile cells from aging bodies and try to reverse the damage that age inadvertently brings on.



# PRODUCT LIST:

## ANTI -AGING:

<b>SENO X Age Reversal</b> capsules	4
<b>SENO X Anti Aging</b> capsules	5
<b>SENO X Asta Green</b> capsules	6
<b>SENO X Green</b> capsules	7

## IMMUNITY AND COMMON COLD:

<b>Pine needle green complex</b> capsules	8
<b>Pine needle green complex + Vit K3, D3</b> capsules	8
<b>Alergosil</b> capsules	9

## COUGH AND SORE THROAT

<b>RSM SilbioSept</b> lozenges	10
<b>Faringosil Oil</b> spray, food supplement	11
<b>Faringosil</b> spray, medical device	11

## QUALITY OF LIFE:

<b>MevaVital</b> capsules	12
<b>RSM Somnidol</b> drops	13
<b>SuperCell GREEN</b> capsules	14
<b>MenaSwiss</b> capsules	15
<b>Cardiopren</b> capsules	16
<b>SuperCell HEPA</b> capsules	17
<b>SuperCell MINDPOWER</b> capsules	18

## SPORTS PERFORMANCE:

<b>SuperCell SPORT</b> capsules	19
<b>Meva Vital SPORT PRO</b> capsules	20

## RAW MATERIALS:

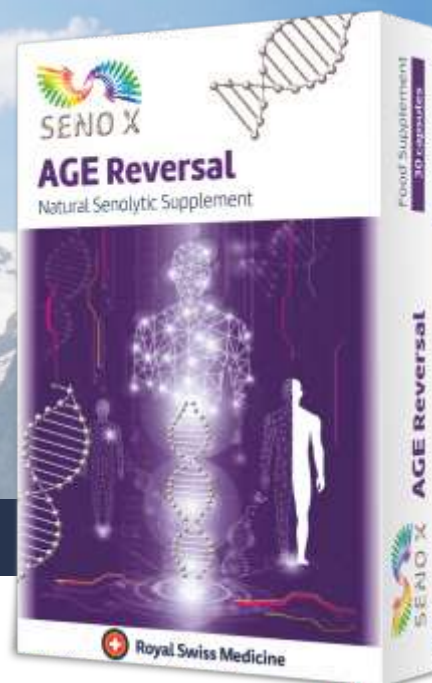
Conifer needle essential oils	21
Spruce provitamin complex	22
Pine needle green complex	22
Silbiol	23
Spruce polyphenols	23

# NATURAL SENOLYTIC SUPPLEMENT – A REVOLUTIONARY NEW APPROACH TO ANTI-AGING

Food supplement



Capsules



## DESCRIPTION:

**SENO X AGE Reversal** is first in a new class of anti-aging nutraceuticals called Senolytics.

Scientists have recently been focused on a new class of drugs aimed at eliminating aging cells from our bodies. The goal is to eliminate poorly functioning, senile cells that clog our bodies and induce a range of degenerative illnesses.

This form of biological housekeeping **frees the body from sluggish, slowly dying cells and allows it to function better with newer, healthier cells.**

This rejuvenation occurs naturally in our youth but declines with age. As we age, we accumulate an increasing number of old, worn out cells that are referred to as senescent. **SENO X AGE Reversal** acts to **keep senescent cells in check by slowing their formation, neutralizing their excreted toxins, and thwarting dysfunctional aberrant cells.**

Senescent cells that accumulate with age can affect the rate of aging, the formation of aberrant cells, pro-inflammatory toxins, and damaging cytokines into the blood stream to damage surrounding healthy cells and organs system wide. For example, senescent cells have alternative RNA splicing that produce senescent toxins such as Progerin, which degrades cell function and leads to other excreted cell toxins causing widespread systemic problems to your body. Moreover, senescent cells are more prone to act in an aberrant way and not perform their normally assigned function, which disrupts normal tissue and organ function.

**SENO X AGE Reversal acts on senescent and aberrant cells to REVITALIZE HEALTH and PROMOTE YOUTHFULNESS.**

## LIST OF ACTIVE INGREDIENTS:

Natural Compounds that neutralize aging and **remove old cells that accumulate in your body:**

<b>Quercetine fitosome</b>	50 mg
<b>Fisetin</b>	150 mg
<b>Berberine</b>	100 mg
<b>Piper longum extract</b> with piperlongumine	100 mg
<b>Nicotinamide (NAD) riboside</b>	50 mg
<b>Pterostilbene</b>	30 mg
<b>Pyrrroloquinoline quinone (PQQ)</b>	10 mg

**QUERCETINE FITOSOME** - natural, bioavailable pigment that seems to be important in the fight against aging and its associated diseases.

**FISETIN** - naturally occurring plant polyphenol that has been found to be a senolytic compound able to clear senescent cells.

**BERBERINE** - has been used for centuries in traditional medicine to treat diseases such as adult-onset diabetes.

**PIPER LONGUM EXTRACT** - contains piperlongumine - novel lead for the development of senolytic agents. It has many pharmacological effects, including strong anti-tumor activity.

**NAD RIBOSIDE** - cell regenerator that promotes healthy aging.

**PTEROSTILBENE** - has positive effect on lifespan, age-related diseases, and health maintenance.

**PQQ** - essential for maintaining nervous system health.

## SUGGESTED USE:

1-3 capsules daily

# PREVENTS PREMATURE AGING AND TOXIN OVERLOAD IN YOUR BODY

Food supplement



Soft gelatine caps



## DESCRIPTION:

Seno X Anti-aging is a galenic complex that contains compounds similar to those found in the bodies of humans and animals. The natural ingredients used in this product are readily absorbed by the body and have demonstrated a high efficacy and extremely low toxicity. Aforementioned attributes are the reason why Seno X Anti-aging has such a wide range of applications in the prevention or treatment of illnesses and in the general promotion of health.

## LIST OF ACTIVE INGREDIENTS:

Pine Needle Green complex	300 mg
Ubiquinol (Q10)	60 mg
Vitamin K2	45 mcg
Vitamin D3	800 IU
Nicotinamide (NAD) riboside	75 mg
Tocotrienol complex	25 mg
Pyrroloquinoline quinone (PQQ)	10 mg
Astaxanthin 10%	40 mg
Bilberry extract MIRTOSELECT®	100 mg

**PINE NEEDLE GREEN COMPLEX**, as a natural antioxidant extract, **helps to prevent premature aging in cells**, and its action promotes the following qualities:

- cholesterol and triglyceride lowering
- protect cells from malfunction and disease
- better heart and nerves health
- better immune health.

Pine Needle Green Complex has been shown to **prevent toxin overload in the body** by its detoxifying actions in the blood and liver, and may enhance:

- heavy metal detoxification
- reduction in severity of chemotherapy side effects
- recovery of liver functions including during hepatitis.

**NAD+** (Nicotinamide Riboside) - enables cells to convert the food that we eat into the energy that we need.

**TOCOPHEROL COMPLEX** - extends Telomeres and «Turns Back the Clock».

**PQQ** - studies of PQQ have shown it can optimize the health of the entire central nervous system, reverse cognitive impairment, improve memory, help in stroke recovery, slow the damage caused by neurodegenerative disease and help protect the brain from toxicity, such as from mercury.

**BILBERRY EXTRACT MIRTOSELECT®** -

- Improves contrast sensitivity in retinal health
- Attenuates free radical damage
- Supports healthy blood sugar levels
- Improves tear secretion in dry eyes
- Supports eye health in retinal challenges.

**UBIQUINOL** with its ability to help rapidly regenerate cells and fight free radicals can dramatically improve the look of your skin. There is also an added protection from external exposure to free radicals such as smoke, pollution, UV rays and other environmental sources.

**ASTAXANTHIN** - Because of astaxanthin effect on cognition, joints and various parts of the body that commonly deteriorate when getting older, it is a terrific anti-aging supplement to help our bodies stay strong and healthy through the aging process.

## SUGGESTED USE:

1-2 capsules daily

## PERFECT COMBINATION OF ACTIVE INGREDIENTS FOR YOUR HEALTH BOOSTING



Food supplement



Soft gelatine caps

### DESCRIPTION:

Asta Green is your natural health booster derived from plants with a strong anti-oxidative power. Anti-oxidants are the molecules that reduce the chance of aging by diminishing or maintaining the level of oxidants with or without free radical activity. Therefore, “anti-oxidants” that act as the key to long-lasting youth and “anti-aging” processes go hand-in-hand. The rate of aging is predicted to be more important than lifespan, therefore, in a life span, slowing the process of ageing is more important. Nowadays, mainly due to lifestyle factors, premature aged population is a great concern, and plant sources of antioxidants and vitamins are the more preferred solution.

### LIST OF ACTIVE INGREDIENTS:

<b>Pine Needle Green complex</b>	300 mg
<b>Linseed oil</b>	300 mg
<b>Astaxanthin 10%</b>	40 mg

**PINE NEEDLE GREEN COMPLEX (*Pinus sylvestris*)** is rich in the key nutrients (polyphenols, chlorophyll, carotenoids, phytosterols, fat-soluble vitamins, minerals etc.) that promote good health and provide potent antioxidant, anti-inflammatory and immunomodulatory action. This allows for extension of availability of Pine Needle Green Complex to consumers for prophylactic purposes, and improvement of various chronic diseases, gastro-intestinal tract disorders, bacterial and viral infections. Pine Needle Green Complex has an ANTI-AGING, hepatoprotective and neuroprotective effect. It strengthens the immune system and improves the overall health.

**LINSEED OIL (*Linum usitatissimum*)** cold pressed from the plant seeds has historically been used for a variety of maladies, including upper respiratory infections, constipation, abdominal pain, urinary infections, and skin inflammation.

Linseed oil is a rich source of the essential fatty acid alpha-linolenic acid (ALA), which is a biologic precursor to omega-3 fatty acids. A recent study in Europe indicates that the consumption of linseed oil for 12 weeks (one tablespoon, providing 8 g ALA/day) in daily diet lowers blood pressure significantly in middle aged men with high blood cholesterol levels.

**ASTAXANTHIN (from *Haematococcus pluvialis*)**- cell membrane nutrient with diverse clinical benefits and anti-aging potential. Natural astaxanthin is a super anti-oxidant. Research has shown Astaxanthin's health benefits to heart, skin, immune, cognitive and eye health, all of which are common aging ailments. Studies demonstrate natural Astaxanthin is 6,000 times more powerful than vitamin C, 770 times more powerful than coenzyme Q10 (CoQ10), 100 times more powerful than vitamin E, and five times more powerful than  $\beta$ -carotene in trapping energy from singlet oxygen, one of the most common reactive oxygen species (ROS) found in the body. Because of astaxanthin effect on cognition, joints and various parts of the body that commonly deteriorate when getting older, it is a terrific anti-aging supplement to help our bodies stay strong and healthy through the aging process. Besides anti-aging function, studies have shown that natural Astaxanthin could play an important role in cognitive health, anti-inflammatory, skin/sun protection, eye health, antihypertensive & neuroprotective effects, and even in sports nutrition area.

### SUGGESTED USE:

1-2 capsules daily

**NUTRITIONALLY RICH  
PLANT-BASED COMPOSITION  
THAT SLOWS THE AGING PROCESSES AND  
HELPS WITH INFLAMMATION**

Food supplement



Soft gelatine caps



**DESCRIPTION:**

This product contains a nutritionally rich plant-based composition that slows the aging processes and helps with inflammation due to the strong combination of senolytic agents, anti-oxidants and general health boosters. Senolytic compounds selectively destroy senescent cells, and thus achieve a narrow form of rejuvenation, as accumulation of senescent cells is one of the root causes of aging. Senolytics produce a reliable reversal of age-related disease and extension of life. Working synergistically, these product ingredients improve energy levels and general well-being. Although inflammation occurs naturally in your body, when it goes wrong or goes on too long, it can trigger disease processes, thus it is important to control inflammation levels and the best way to do it is thorough a natural and safe formula such as Seno X green!

**LIST OF ACTIVE INGREDIENTS:**

<b>Pine Needle Green complex</b>	<b>300 mg</b>
<b>Tocotrienol complex</b>	<b>20 mg</b>
<b>Apigenin (<i>Apium graveolens</i> L.)</b>	<b>20 mg</b>
<b>Ginseng (<i>Panax ginseng</i>)</b>	<b>4 mg</b>
<b>Berberine</b>	<b>150 mg</b>

**PINE NEEDLE GREEN COMPLEX (*Pinus sylvestris*)** is rich in the key nutrients (polyphenols, chlorophyll, carotenoids, phytosterols, fat-soluble vitamins, minerals etc.) that promote good health and provide potent antioxidant, antiinflammatory and immunomodulatory action.

**TOCOPHEROL COMPLEX** - have many anti-aging effects. Vitamin E protects low density lipoprotein-cholesterol (LDL-C) from oxidation, and higher vitamin E intake is associated with reduced heart disease and cardiac deaths.

**GINSENG (*Pinus sylvestris*)** has been used in traditional Chinese medicine for centuries. Ginsenosides in ginseng seem to regulate inflammation, provide antioxidant protection and maintain the health of cells, which could help decrease the risk of certain kinds of cancer. Ginseng has also been shown to help fight fatigue and promote energy by lowering oxidative damage and increasing energy production in cells.

**APIGENIN** is a natural product belonging to the flavone class that is the aglycone of several naturally occurring glycosides. Apigenin induces autophagy (a kind of cellular waste-recycling system) in leukemia cells, which may support a possible chemopreventive role. Apigenin has been shown to prevent renal damage caused by ciclosporin.

Apigenin supplementation:

- Decreases Inflammation
- Has Anti-Obesity Properties
- May Lower Cortisol
- Reduces Blood Sugar Levels

**BERBERINE** - has been used for centuries in traditional medicine to treat diseases such as adult-onset diabetes. Berberine has been shown to possess a wide range of pharmacological activities, including antidiabetic, antihyperlipidemic, antiarrhythmic, and antioxidant activities.

**SUGGESTED USE:**

1-2 capsules daily

# YOUR GREEN, ULTRAPOTENT HEALTH AND IMMUNITY BOOSTER



Food supplement



Soft gelatine caps

## DESCRIPTION:

Pine needle extractives are rich in the key nutrients (polyphenols, chlorophyll, carotenoids, phytosterols, fat-soluble vitamins, minerals etc.) that **promote good health** and **provide potent antioxidant, anti-inflammatory and immunomodulatory action**. Formula that combines pure pine needle complex with vitamins K2 and D3 **help maintain cardiovascular and bone health**.

## LIST OF ACTIVE INGREDIENTS:

<b>Pine needle green complex</b>	300 mg
with polyphenols	≥7,5 mg
with chlorophylline	≥35 mg

<b>Pine needle green complex</b>	300 mg
with polyphenols and chlorophylline	
Vitamin K2	45 mcg
Vitamin D3	20 mcg

**PINE (*Pinus sylvestris*) NEEDLE GREEN COMPLEX** - a natural biologically active compound fraction that contains polyphenols, chlorophyll, carotenoid, phytosterol, vitamins, minerals, fatty and resin acids. It is extracted from green conifer needles and acts as a potent antioxidant, has antiatherosclerotic action, as well as immunomodulatory properties<sup>(1)</sup>.

The pine species selected are subjected to extremes in environmental conditions and have developed properties that have ensured their survival and ability to thrive in these conditions over 1.5 million years in evolutionary terms. The chemical compounds that give each species these amazing properties are highly bioavailable in human systems yielding fantastic medicinal and health giving results.

### **Antioxidant**

As a natural antioxidant complex, it helps to prevent premature aging in cells.

### **Anti-microbial**

The anti-microbial functions of complex include actions as an anti-bacterial, anti-viral and anti-fungal agent.

### **Gastrointestinal**

Complex helps to improve stomach and gut health. It recovers stomach and gut functions thus better digestive health leads to improved immune health

### **Hepatoprotective**

Complex has been shown to prevent toxins overload in the body by its detoxifying actions in the blood and liver. It may enhance heavy metal detoxification, reduction in severity of chemotherapy side effects and recovery of liver functions including hepatitis.

### **VITAMIN K - helps maintain the body's calcium**

**balance** <sup>(2)</sup>, which affects everything from arterial health to bone density. Vitamin K helps facilitates calcium transport into bone and helps promote a healthy calcium balance in the arteries. Research has shown that vitamin K is essential for the proper function of a protein called matrix Gla-protein (MGP) <sup>(3)</sup>.

### **VITAMIN D3 (cholecalciferol) - a fat-soluble**

prohormone that effects the expression of more than 200 genes in the body. It is essential for optimal health. **D3 contributes to the normal function of the immune system and has a role in the process of cell division** <sup>(2)</sup>.

## Official EFSA Health Claims

### SUGGESTED USE:

1-3 capsules daily

#### References:

- 1.Okai&Higashi-Okai, Int J Immunopharmacol. (1996)
- 2.European Food Safety Agency (2018)

- 3.Maresz, Integr Med (2015)



# ALERGOSIL - NATURAL REMEDY FOR SEASONAL AND NON-SEASONAL ALLERGIES



Food supplement



Soft gelatine caps

## DESCRIPTION:

Allergic rhinitis is one of the most common inflammatory diseases. Prevalence in Europe: 25% of the population.

Thanks to its **innovative formulation**, ALERGOSIL offers **more soluble** curcumin and quercetine compared to other products. Synergy of 3 natural active principals for **total care and relief of allergic rhinitis**.

## LIST OF ACTIVE INGREDIENTS:

### CURCUMIN -

the best characterized anti-inflammatory agent. Curcumin has been shown to inhibit inflammatory responses pathway and expression of antibodies, thereby downregulating the proinflammatory responses <sup>(1)(2)</sup>.

### QUERCETIN -

commonly occurring secondary metabolite in plants. Quercetin has various biological activities including - anti-inflammatory and anti-allergic effects<sup>(3)</sup>.

### VITAMIN D -

1. Contributes to the normal function of the immune system
2. Has a role in the process of cell division.

Official EFSA Health Claims <sup>(4)</sup>

## SUGGESTED USE:

2 capsules daily

## SUPPLEMENT FACTS

Daily dose 2 capsules - Doses per container 15

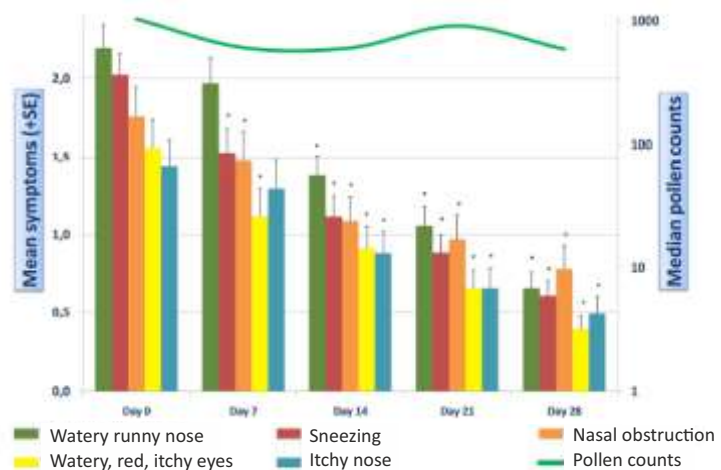
	Amount Per Day in 2 capsules	Dietary Reference Value (DRV) %
High bioavailable curcumin extracted from <i>Curcuma longa</i> root	84 mg	* %
Quercetine extracted from <i>Saphora japonica</i> flower buds	130 mg	* %
Vitamin D3	4,5 µg	90 %

\* - Dietary Reference Value (DRV) not established

## CLINICAL DATA:

(Open 28 days pilot study)

Significantly decreases all symptoms of allergic rhinitis  
 “Antihistaminic-like” product with no side-effects.



References:

1. Alappat & Awad, Nutr Rev (2010)
2. Shakibaei et al., Biochem Pharmacol (2007)

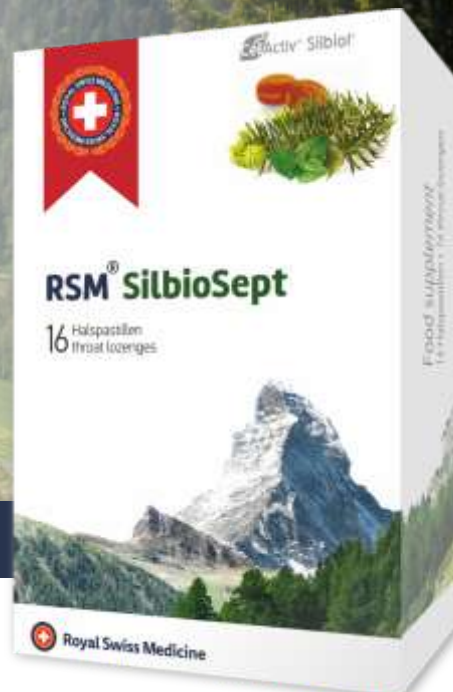
3. Makino et al., Biol Pharm Bull (2009)
4. European Food Safety Agency (2018)

# NATURAL, EFFECTIVE AND SAFE REMEDY FOR COMMON COLD AND SORE THROAT

Food supplement



Lozenges



## DESCRIPTION:

Natural, effective and safe remedy for common cold and sore throat. Unique composition with fresh Nordic forest breeze and taste.

- Quick reduction of pain and/or scratching in the throat
- Acts directly in case of cold (antiviral activity)
- Protects and heals mucosa by prolonged sustainable lining
- Original fresh taste („taste of the Nordic forest“)
- Sugar free

RSM SilbioSept is based on the patented bioactive complex - Silbiol®.

## LIST OF ACTIVE INGREDIENTS:

In daily dose (5 lozenges):	
Sea buckthorn oil	500 mg
Propolis dry extract	175 mg
Echinacea flower dry extract	100 mg
Cranberry powder	115 mg
Spruce extract SILBIOL®	175 mg

### SEA BUCKTHORN -

*Hippophae rhamnoides* L. clinical studies have shown multiple beneficial effects of the oils on mucous membranes. Promoting tissue regeneration, improving immune function and reducing lipid peroxidation is clearly the fundamentals of these effects.

The antiulcerative mechanism of sea buckthorn oils is related to promoting the regeneration of mucous membranes and the epithelisation of ulcerated areas<sup>(1)</sup>.

### PROPOLIS DRY EXTRACT -

well known to have a natural antibacterial effect, and it has a wide range of biological and medicinal properties - strong antiviral analgesic <sup>(2)</sup> activities.

### ECHINACEA FLOWER EXTRACT -

traditionally, *Echinacea purpurea* was known as an 'anti-infective' agent due to strong immunomodulatory activity (acts on humoral and cellular immune response). Several clinical trials of Echinacea preparations have reported effects in the prevention and treatment of upper respiratory tract infections (URTIs) and influenza viruses.

### CRANBERRY POWDER -

Cranberries are powerful and bioavailable antioxidants that reduce symptoms of cold and improve mouth hygiene by reducing dental plaque.

### SILBIOL®

the biologically active compound fraction extracted from spruce needles. The main active component is epimanol (> 25%), with antibacterial <sup>(3)</sup> and anti-inflammatory <sup>(4)</sup> activities. Other components: carotenoids and sterols. The product has fresh Nordic forest breeze and taste.

## SUGGESTED USE:

Up to 5 lozenges a day. Suitable from 3 years of age.

### References:

- 1.Erkola, Agrofood industry hi-tech (2003)
- 2.Li at al., Chem Biodivers (2007)
- 3.Kamburoglu&Ozen, The journ of Turkish society of algology (2011)
- 4.Alcaraz et al., J Nat Prod (1989)
- 5.Li at al., Chem Biodivers (2007)
- 6.Li at al., Chem Biodivers (2007)
- 7.Li at al., Chem Biodivers (2007)
- 8.Li at al., Chem Biodivers (2007)
- 9.Li at al., Chem Biodivers (2007)
- 10.Li at al., Chem Biodivers (2007)
- 11.Alcaraz et al., J Nat Prod (1989)

# NATURAL REMEDY FOR YOUR THROAT - A FAST SORENESS RELIEF

Medical device



Spray 30ml



## DESCRIPTION:

Moisturizing spray for mouth and throat mucosal moisture retention:

1. In case of throat pain and hoarseness
2. In case of mouth and throat mucosal irritation caused by dry cough and hoarseness.

**Faringosil** covers the mouth and throat mucosa as a moisturizing film and naturally recovers it.

## LIST OF ACTIVE INGREDIENTS:

### CONIFER (PICEA ABIES) NEEDLE EXTRACT SILBIOL® -

the biologically active compound fraction extracted from spruce needles. The main active component is epimanol (> 25%), with antibacterial <sup>(1)</sup> and anti-inflammatory activities.

### CANOLA AND OLIVE OIL -

moisturizes, soothes and protects the mucosa of mouth and throat. Promotes the adhesive functions of other product's active ingredients.

### MARIGOLD (CALENDULA OFFICINALIS) PETALS -

used for treating sore throat and mouth, as well as reduction of fever. It is thought that the chemicals in calendula help new tissue growth in wounds and decrease swelling in the mouth and throat.

### SEA BUCKTHORN (HIPPOPHAE RHAMNOIDES) OIL -

can help protect your body against infections. Experts attribute this effect, in large part, to the high flavonoid content of the oil. Flavonoids are beneficial plant compounds which strengthen the immune system by increasing resistance to illnesses<sup>(2)</sup>.

## LIST OF ACTIVE INGREDIENTS:

### ICELAND MOSS EXTRACT -

traditionally used to treat mild inflammation of the oral and pharyngeal mucosa <sup>(3)</sup>.

### DEXPANTHENOL -

in addition to its anti-inflammatory effects, it has hydrating and protecting properties over the mucosa <sup>(4)</sup>.

### CAMOMILE EXTRACT -

traditionally used for centuries as an anti-inflammatory, antioxidant, mild astringent and healing medicine <sup>(5)</sup>.

### ZINC-HISTIDINE COMPLEX -

has a role in the stabilization of membranes and in the immune response <sup>(6)</sup>.

### MENTHOL -

reduces cough sensitivity and influences inspiratory flows. It is a reliever for variant airway discomfort <sup>(7)</sup>.

### EUCALYPTUS OIL -

antimicrobial substance, though provides benefit for both purulent and non-purulent respiratory problems, such as bronchitis, asthma, and chronic obstructive pulmonary disease (COPD) <sup>(8)</sup>.

## SUGGESTED USE:

Use as necessary several times a day by spraying 1–2 doses. Recommended for adults and children (6+ years).

### References:

1. Srivastava et al., Mol Med Rep (2010)
2. Krejcarová et al., Acta Vet Brno (2015)
3. Zambare et al., Pharm Biol (2012)
4. Ebner et al., Am J Clin Dermatol (2002)
5. Srivastava et al., Mol Med Rep (2010)
6. Scholmerich et al., Am J Clin Nutr (1987)
7. Millqvist et al., Respir Med (2013)
8. Sadlon & Lamson, Altern Med Rev (2010)

# MEVAVITAL - MEVALONATE PATHWAY OPTIMIZER

Food supplement



Soft gelatine caps



## DESCRIPTION:

**MevaVital** is the only product on the market that optimizes the action of Mevalonate pathway and boosts mitochondrial energy and neogenesis in your body.

Mitochondria are the source of your life and health. They give you the energy needed to breathe, pump your blood and power your heartbeat, thus being one of the most important elements in human cells, but their efficacy is strongly dependent on the activity of the Mevalonate pathway.

Mevalonate pathway produces isoprenoids (dolichols) a diverse class of over 30,000 biomolecules such as cholesterol, heme, and all steroid hormones.

**MevaVital** dietary supplement contains *Pinus sylvestris* green needle complex, Q10, Tocotrienols, vitamins K2 and D3 and NAD riboside. These vital nutrients give your cells the boost to fight off age-related decline so you can **live your life to the fullest**.

## LIST OF ACTIVE INGREDIENTS:

<b>Pine needle green complex</b>	300 mg
<b>Nicotinamide (NAD) riboside</b>	50 mg
<b>Vitamin K2</b>	45 mcg
<b>Vitamin D3</b>	20 mcg
<b>Ubidecarenone (Q10)</b>	60 mg
<b>Tocotrienol complex</b>	25 mg
<b>Pyrrroloquinoline quinone (PPQ)</b>	10 mg

### **PINE (*Pinus sylvestris*) NEEDLE GREEN COMPLEX -**

a natural biologically active compound that acts as a potent antioxidant, has antiatherosclerotic action, as well as immunomodulatory properties<sup>(1)</sup>.

**NAD RIBOSIDE** - a critical component of the processes involved in mitochondrial ATP production.

**COENZYME Q10** - a micronutrient that has been documented to improve mitochondrial health and increase energy production, thereby reducing degenerative aging effects associated with mitochondrial DNA damage.

**TOCOTRIENOL COMPLEX** - contributes to the protection of cells from oxidative stress, improves cardiovascular and metabolic health, as well as provides neuroprotection and anti-inflammatory effects.

**PQQ** - its role in mitochondrial health ranges from free radical protection to stimulating mitochondrial biogenesis where damaged or reduced mitochondria are present.

**VITAMIN K** - helps maintain the body's calcium balance<sup>(2)</sup>.

**VITAMIN D3** - contributes to the normal function of the immune system and has a role in the process of cell division<sup>(2)</sup>.

## Official EFSA Health Claims

### SUGGESTED USE:

1-2 capsules daily

References:

1.Okai&Higashi-Okai, Int J Immunopharmacol. (1996)

2.European Food Safety Agency (2018)

# LIPOSOMAL FULL SPECTRUM CANNABIS SATIVA EXTRACT WITH MELATONIN AND VITAMIN B6



Food supplement

Liquid 30 ml

## DESCRIPTION:

CBD is very well known non psychoactive phytocannabinoid, derived from Cannabis Sativa plant.

In recent years the research on CBD bloomed and we gained knowledge about its medical potential as well as how CBD works in our bodies. RSM Somnidol features Melatonin, also known as sleep hormone – that takes care of falling asleep and Vitamin B6 that contributes to normal psychological function.

Because we know the potential and believe in power of CBD we decided to dig into the science to make our CBD products even better. Combining it with Melatonin, which enriches CBD's function and Vitamins B6 that make RSM Somnidol a powerful combination of nature's precious substances, supporting healthy sleep.

In RSM Somnidol we incorporate all active ingredients into liposomes, to make it act lightning quick, enhance their absorption and prolong their blood circulation time.

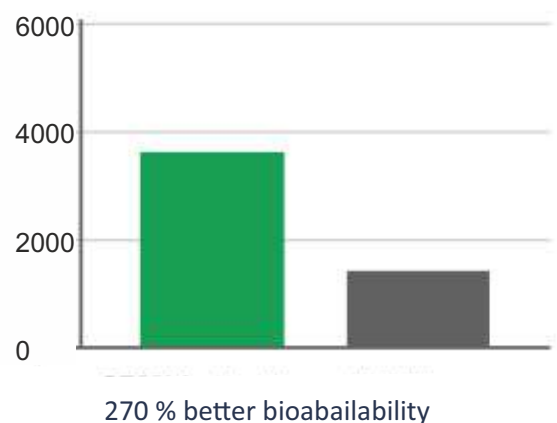
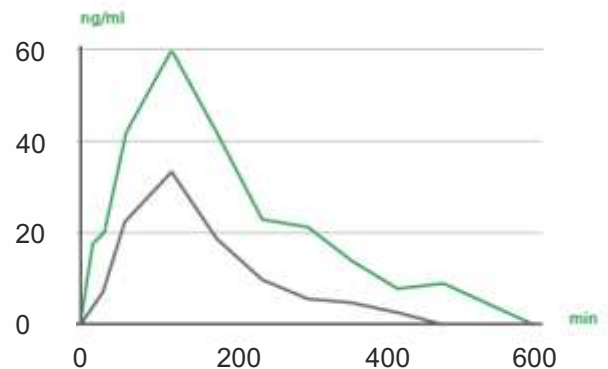
## LIST OF ACTIVE INGREDIENTS:

	Amount in bottle
CBD	75 mg
Melatonin	45 mg
B6 (as pyridoxine)	19,5 mg

## SUGGESTED USE:

1 ml daily

The result proved in human testing is up to 2 times better absorption and prolonged blood circulation time, up to 24 hours, which is 12 hours more than with ordinary oil solutions. Additionally RSM Somnidol delivers its effect several hours faster than competitive products. That means that each mg of CBD in RSM Somnidol results in same blood concentration as 2 mgs of CBD from ordinary oil solutions. What is more CBD reaches your blood 5 minutes after ingestion, compared to up to 2 hours with competitive oil solution available on the market..



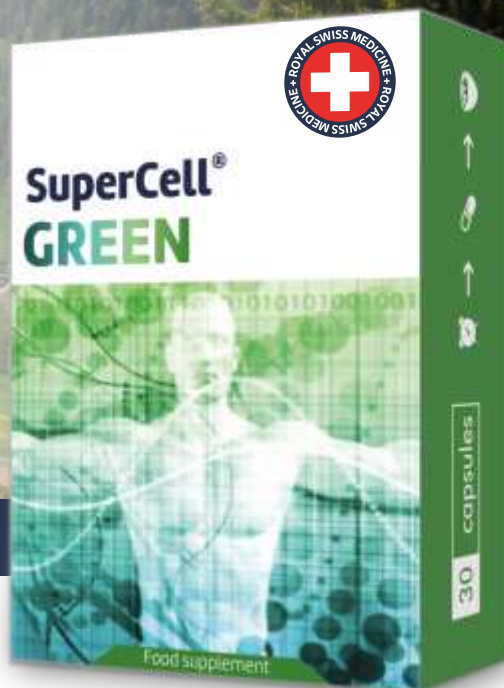
■ Liposomal CBD  
■ Traditional CBD oil solution

# NATURAL ULTRAPOTENT HEALTH BOOSTER

Food supplement



Soft gelatine caps



## DESCRIPTION:

SuperCell GREEN is a **100% natural** biologically active product extracted from green needles of conifers using a patented extraction technique. It contains coniferous polyprenols,  $\beta$ -sitosterol,  $\beta$ -carotene, nonacosanol, vitamin E phytol (vitamin E), terpenes and essential phospholipids (mostly phosphatidylcholine).

This extract has anti-oxidant, hepato-protective, regenerative and anti-inflammatory action.

**The active substances participate in various processes in the human organism and are able to maintain general health and regeneration of the cells.**

## LIST OF ACTIVE INGREDIENTS:

Norway spruce needle provitamine complex	300 mg
------------------------------------------	--------

**POLYPRENOLS** - naturally occurring analogues and precursors of dolichols that play an important role in all vital functions. Polyprenols have been the subject of extensive clinical trials to confirm their efficacy and safety in the treatment of liver diseases and different viruses (hepatitis B, common cold virus strains). Our innovative liposomal formulation improves the absorption of polyprenols and essential phospholipids in the human body.

**TERPENES** – perform an important role in therapeutic plant synergy and have shown to have anti-cancer action such as tumour anti-proliferative, apoptosis-inducing and chemopreventive effects.

**BETA-SITOSTEROL** - effective for high cholesterol reduction. Taking beta-sitosterol significantly lowers total and bad (LDL) cholesterol levels, but it does not raise good (HDL) cholesterol levels. Another beneficial effect is for men who have trouble urinating because of an enlarged prostate, or “benign prostatic hyperplasia” (BPH).

**NONACOSANOL** – studies have shown that cosanols have the ability to decrease cholesterol production in the liver and to increase the break down of LDL (low-density lipoprotein or "bad") cholesterol. Nonacosanol also decreases the stickiness of particles in the blood known as platelets, which can help reduce blood clots.

**PHYTOL (VITAMIN E)** – is the key for strong immunity and healthy skin and eyes. In recent years, vitamin E supplements have become popular as antioxidants. These are substances that protect cells from damage.

**BETA-CAROTENE** - the human body converts beta carotene into vitamin A (retinol), thus beta carotene is a precursor of vitamin A. We need vitamin A for healthy skin and mucus membranes, our immune system, and good eye health and vision.

**PHOSPHATIDYLCHOLINE** - because the body uses phosphatidylcholine to make a brain chemical acetylcholine, it is used for treating "brain-centered" conditions such as memory loss, Alzheimer's disease, anxiety, manic-depressive disorders, and a movement disorder called tardive dyskinesia.

## SUGGESTED USE:

1-2 capsules daily

# MENA SWISS – ENSURES EFFECTIVE CALCIUM DELIVERY



Food supplement



## DESCRIPTION:

Many people are plagued by a lack of calcium in their bones, leading to osteoporosis and yet many of us suffer from excess calcium in our arteries, leading to atherosclerosis or hardening of the arteries.

**MenaSwiss** is effective combination to protect your body from this “calcium paradox” <sup>(1)</sup>.

## LIST OF ACTIVE INGREDIENTS:

### MENAQUINONE (VITAMIN K2) -

fat-soluble vitamin, required for  $\gamma$ -carboxylation of vitamin K-dependent proteins, which play an important role in the bone, connective tissue and cardiovascular metabolism processes.

Vitamin K2 contributes to the maintenance of normal bones.

### CHOLECALCIFEROL (VITAMIN D3) -

1. Contributes to the normal function of the immune system
2. Has a role in the process of cell division
3. Contributes to normal blood calcium levels, normal absorption and utilisation of calcium.

### CALCIUM -

1. Contributes to normal muscle function, neurotransmission and energy-yielding metabolism
2. Has a role in the process of cell division and specialisation.

## SUPPLEMENT FACTS

Daily dose: 1 capsule. Doses per container: 30

	Amount Per 1 capsule	Dietary Reference Value (DRV) %
Vitamin K2	90 µg	113 %
Vitamin D3	25 µg	500 %
Calcium	250 mg	30 %

These active substances are required for healthy muscle function and are able to prevent bone calcification (promote bone formation and recovery), and osteoporosis. Apart from that, MenaSwiss supports a healthy function of liver, kidneys and cardiovascular system.

### MenaSwiss:

- prevents the calcification of arteries, soft tissues and cartilage
- is involved in calcium absorption and deposition in the bone matrix
- improves bone mineral density and increases affinity to hydroxyapatite nucleation processes and enhances bone crystals
- provides interaction of calcium and vitamin D <sup>(3)(4)</sup>.

## SUGGESTED USE:

Adults should take 1 capsule per day, preferably in the morning.

Pregnant and breastfeeding women are encouraged to consult their physician before the use of this product. Not suitable for children under 3 years of age.

## Official EFSA Health Claims <sup>(2)</sup>

### References:

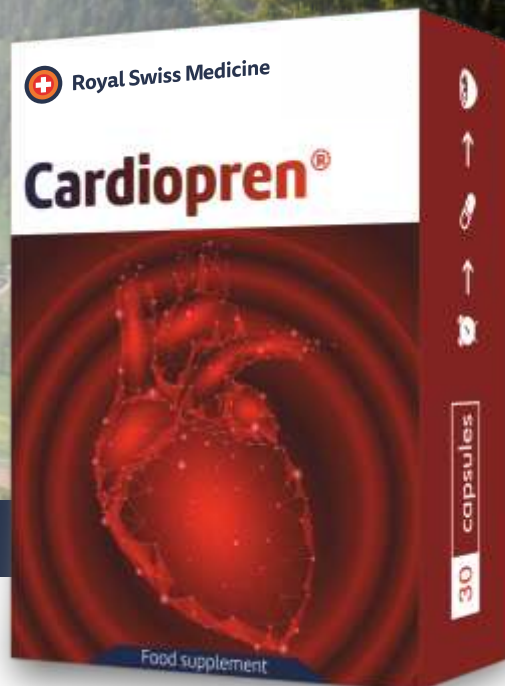
1. Rheaume-Bleue, John Wiley & Sons (2011)
2. European Food Safety Agency (2018)

3. Flore et al., Eur Rev Med Pharmacol (2013)
4. Sang Hyeon et al., J Korean Med Sci (2011)

# PUMP UP YOUR HEART WITH CONIFER POLYPRENOLS AND COENZYME Q10

Food supplement

Soft gelatine caps



## DESCRIPTION:

Heart disease remains one of the leading cause of death for both women and men. Even if you have a family history of heart disease, some nutrients can help keep your ticker in top shape.

**Patented composition<sup>(1)</sup> of polyphenols and coenzyme Q10 reduces statin-induced adverse effects, as well as improves the functionality of myocardium and muscle cells.**

## LIST OF ACTIVE INGREDIENTS:

Pine needle green complex	600 mg
Coenzyme Q10	200 mg
Linseed oil	400 mg

**PINE NEEDLE GREEN COMPLEX** - a natural biologically active compound fraction that contains polyphenols, chlorophyll, carotenoid, phytosterol, vitamins, minerals, fatty and resin acids.

**POLYPRENOLS** - unique natural substance - bioregulator obtained by original technology from conifer tree needles and play a vital role in cell metabolism and thereby impact such organ systems as skeletal muscles and heart, liver and brain.

**COENZYME Q10** - natural antioxidant synthesized by the body. It is present in higher concentrations in organs with higher energy requirements such as the heart. Coenzyme Q10 is a vital participant in the chain of metabolic chemical reactions that generate energy within cells.

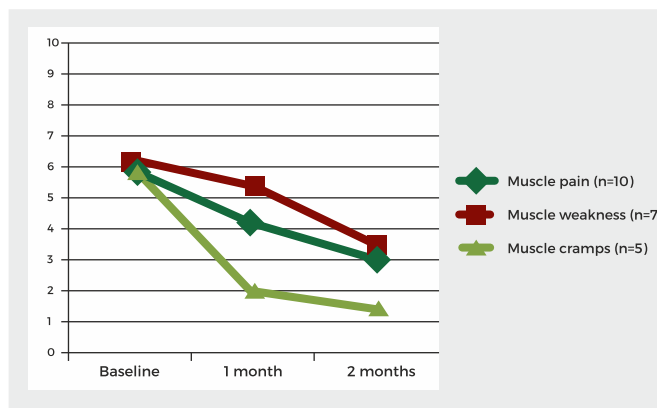
**LINSEED OIL** - loaded with healthy omega-3s, alpha-linolenic acid that have been associated with healthier brains and hearts.

## SUGGESTED USE:

2 capsules daily

## CLINICAL DATA: (open-label, one-center prospective pilot study 11 patients)

Self reported muscle symptom scores during the study period:



This complex of active substances with the synergic relations between its components:

- Improves metabolism and functionality of myocardium<sup>(2)</sup>
- Alleviates statin induced muscle symptoms<sup>(3)</sup>
- Reduces statin-induced adverse effects (myopathy, rhabdomyolysis, kidney damage and liver dysfunction)<sup>(3)(4)</sup>
- Improves muscle strength<sup>(4)</sup>
- Increases load tolerance and energy.

### References:

1. Vanaga & Klētnieks, Latvian Patent No. LV 15057 B (2015)
2. Camara et al., Antioxid Redox Signal 13 (2010)

3. Latkovskis et al., Medicina (2016)
4. Jansone et al., Chin J Pharmacol Toxicol (IUPHAR) (2015)

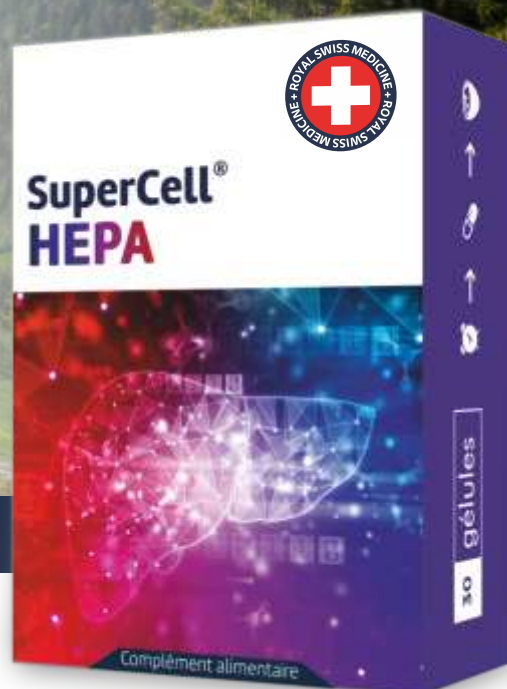


# RESTORE YOUR LIVER FUNCTION AND REGENERATE DAMAGED CELLS WITH NEXT GENERATION HEPATOPROTECTOR

Food supplement



Soft gelatine caps



## DESCRIPTION:

Liver problems affect more than two billion people worldwide, though there are only few new solutions for hepatoprotection.

Supercells HEPA is **unique** product that contains coniferous **polyprenols** and **essential phospholipides (mostly phosphatidylcholine)**. These substances participate in metabolic processes in the liver and are **able to maintain liver health and regeneration of cells**.

Product has been developed using **modern nanotechnology** principles.

The **innovative liposomal formulation improves** the valuable substance **absorption** in human organism<sup>(1)</sup>.

## LIST OF ACTIVE INGREDIENTS:

**LIPOSOMAL SPRUCE NEEDLE POLYPRENOLS** - unique natural substance - bioregulator obtained by original technology from conifer tree needles and play a vital role in cell metabolism.

Polyprenols -

1. Regenerates liver cells<sup>(2)(3)</sup>
2. Restores liver function and elasticity<sup>(4)</sup>
3. Reduces symptoms of chronic liver damage (liver fibrosis, NAFLD), hepatitis and alcoholic liver cirrhosis<sup>(5)</sup>.

**PHOSPHATIDYLCHOLINE** - plant origin purified essential phospholipid which is capable of repairing damage to the liver caused by alcohol, poor diet and other factors<sup>(6)</sup>.

## SUPPLEMENT FACTS

Daily dose 1 capsule - Doses per container 30		
	Amount Per Day in 1 capsule	Dietary Reference Value (DRV) %
Phospholipid mixture - including phosphatidylcholine	470 mg 188 mg	* %
Siberian fir needle extract - including polyprenols	30 mg 22.5 mg	* %

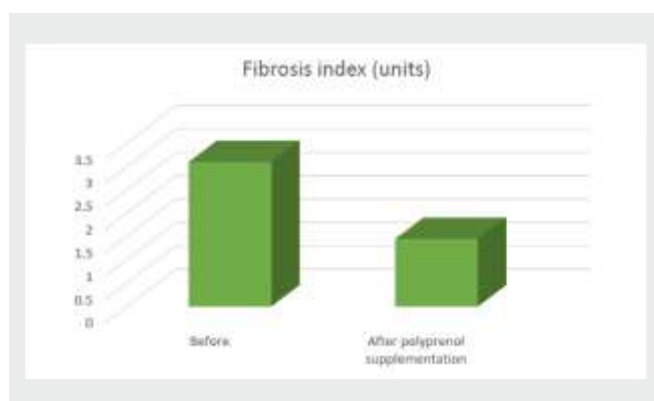
\* - Dietary Reference Value (DRV) not established

## SUGGESTED USE:

1-2 capsules daily

## CLINICAL DATA:

Hepatoprotective drugs based on botanic origin polyprenols showed their efficacy in cases of NASH. The decrease of clinical biochemical activity of the disease, normalized lipid spectra, increased liver elasticity and decreased the risk of liver cirrhosis development was observed.



## References:

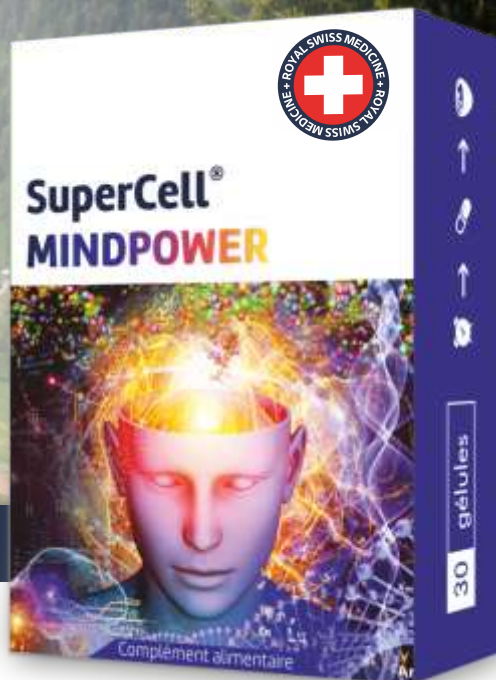
1. Singh et al., Drug Del Sci Technol 39 (2017)
2. Rip et al., Progress in lipid research (1985)
3. Kuznecovs et al., Eur J Gastroenterol Hepatol (2006)
4. Yang et al., Fitoterapia (2011)
5. Shabanov et al., Фармацевтический бюллетень. Казахстан (2012)
6. Nicolson & Ash, Biochim Biophys Acta (BBA) (2014)

# BENEFIT YOUR NERVOUS CELLS WITH THE POWER OF CONIFERS IN LIPOSOMES

Food supplement



Soft gelatine caps



## DESCRIPTION:

Neurological disorders affect millions globally - people in all countries, irrespective of age, sex, education or income.

Give your brains and nervous system **Supercells** they need to **function properly** and **avoid premature death of the brain cells**.

Supercells MINDPOWER is **unique** product that has been developed using **modern smart technology** principles. The **innovative liposomal** form of the product improves the valuable substance absorption in human organism<sup>(1)</sup>.

## LIST OF ACTIVE INGREDIENTS:

SUPPLEMENT FACTS		
Daily dose 1 capsule - Doses per container 30		
	Amount Per Day in 1 capsule	Dietary Reference Value (DRV) %
Phospholipid mixture - including phosphatidylcholine	470 mg 188 mg	* %
Siberian fir needle extract - including polyprenols	30 mg 22.5 mg	* %

\* - Dietary Reference Value (DRV) not established

**LIPOSOMAL SPRUCE NEEDLE POLYPRENOLS** - unique natural substance - bioregulator obtained by original technology from conifer tree needles and play a vital role in cell metabolism and thereby impact such organ systems as skeletal muscles and heart, liver and brain.

Polyprenols -

1. Regenerates nervous cells <sup>(2)</sup>;
2. Improves memory, attention, cognition <sup>(3)</sup>;
3. Improves mood <sup>(3)</sup>.

**LECITHIN** - plant origin purified essential phospholipid mixture consisting mainly of phosphatidylcholine. Choline is necessary for the proper transmission of nerve impulses from the brain through the central nervous system. Choline supplementation can lead to a sharper memory and help people with Alzheimer's <sup>(4)</sup> and improve the brain's functional pathways <sup>(5)</sup>.

## SUGGESTED USE:

1-2 capsules daily

### References:

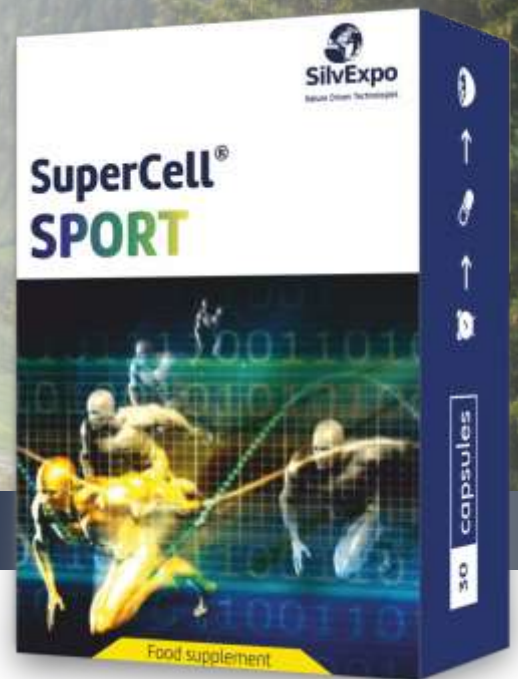
1. Singh et al., Drug Deliv Sci Technol 39 (2017)
2. Khodanovich et al., J Phys Conf Ser (2016)
3. Shabanov et al., Фармацевтический бюллетень. Казахстан (2012)
4. Poly et al., Am J Clin Nutr (2011)
5. Tayebati & Amenta, Clin Chem Lab Med (2013)

# BOOST YOUR CARDIO POWER AND ENDURANCE WITH SUPERCCELLS

Food supplement



Soft gelatine caps



## DESCRIPTION:

Heart is the muscle most abundant in mitochondria and thus the biggest «energy factory» in the body.

Supercells SPORT is **unique** product that has been developed using **smart technology** principles. The **innovative liposomal** form of the product improves the valuable substance absorption in human organism<sup>(1)</sup>.

## LIST OF ACTIVE INGREDIENTS:

SUPPLEMENT FACTS		
Daily dose 1 capsule - Doses per container 30		
	Amount Per Day in 1 capsule	Dietary Reference Value (DRV) %
Phospholipid mixture - including phosphatidylcholine	470 mg 188 mg	* %
Siberian fir needle extract - including polyprenols	30 mg 22.5 mg	* %

\* - Dietary Reference Value (DRV) not established

**LIPOSOMAL SPRUCE NEEDLE POLYPRENOLS** - unique natural substance - bioregulator obtained by original technology from conifer tree needles and play a vital role in cell metabolism and thereby impact such organ systems as skeletal muscles and heart, liver and brain.

Polyprenols -

1. Improves muscle strength<sup>(2)</sup>
2. Protects and regenerates cardiomyocytes and muscles cells<sup>(3)</sup>
3. Increases oxygen uptake efficiency and aerobic capacity during physical load<sup>(4)</sup>
4. Positively impacts blood pressure and heart rate<sup>(4)</sup>;

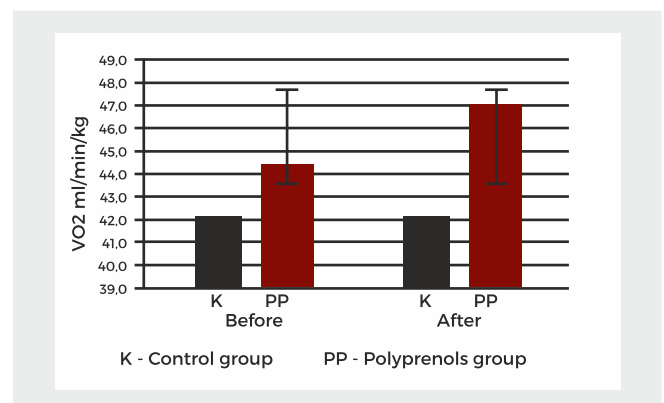
**PHOSPHATIDYLCHOLINE** - plant origin purified essential phospholipid. Choline is needed for many steps in metabolism, it produces important neurotransmitter for muscle control<sup>(5)</sup>.

## SUGGESTED USE:

1-2 capsules daily

## CLINICAL DATA:

SuperCell SPORT supplementation increase oxygen uptake efficiency and aerobic capacity.



## References:

1. Singh et al., Drug Del Sci Technol 39 (2017)
2. Jansone et al., Chin J,Pharmacol Toxicol (2015)
3. Shabanov et al., (2012)

4. Plakane, University of Latvia (2017)
5. Institute of Medicine (US), Standing Committee on the Scientific Evaluation of Dietary Reference Intakes (1998)

# ULTRAPOTENT SPORT PERFORMANCE BOOSTER

Food supplement



Soft gelatine caps



## DESCRIPTION:

**MevaVital SPORT PRO** helps boost cellular energy production for a positive effect on overall athletic performance and long-term health status.

Product supplementation:

- has positive effect on mitochondria ATP production
- improves strength and endurance
- boosts muscle endurance and recovery
- enhances peak power production in athletes
- boosts output of the heart
- boosts mitochondrial biogenesis.

## LIST OF ACTIVE INGREDIENTS:

<b>Pine needle complex</b>	300 mg
<b>Ubiquinol (Q10)</b>	60 mg
<b>Vitamin K2</b>	45 mcg
<b>Vitamin D3</b>	25 mcg
<b>Nicotinamide (NAD) riboside</b>	50 mg
<b>Tocotrienol complex</b>	25 mg
<b>Pyrroloquinoline quinone (PQQ)</b>	10 mg
<b>Astaxanthin 10%</b>	40 mg
<b>(R)-Lipoic acid</b>	100 mg

### **PINE (*Pinus sylvestris*) NEEDLE GREEN COMPLEX -**

a natural biologically active compound fraction that contains polyphenols, chlorophyll, carotenoids, phytosterols, vitamins, minerals, fatty and resin acids. It is extracted from green conifer needles and acts as a potent antioxidant, has antiatherosclerotic action, as well as immunomodulatory properties<sup>(1)</sup>.

**TOCOTRIENOLS** - scientifically proven to prolong running times.

**UBIQUINOL** - electron-rich (reduced) form of coenzyme Q10. Ubiquinol is an active antioxidant molecule that helps transform food into energy. It enhances peak power production in athletes.

**NAD RIBOSIDE** - increases the number of mitochondria in your cardiac and muscle cells, thereby improving aerobic endurance.

**PQQ** - its role in mitochondrial health ranges from free radical protection to stimulating mitochondrial biogenesis where damaged or reduced mitochondria are present.

**ASTAXANTHIN** - Studies show that astaxanthin can improve strength and endurance, boost muscle endurance & recovery, lower lactic acid and fatigue, increase muscle strength.

**(R)-LIPOIC ACID** - mitochondrial compound involved in energy metabolism. Research shows that (R)-lipoic acid is a more biologically active form of ALA that offers greater antioxidant and neuroprotective benefits at substantially lower doses than the synthetic forms of lipoic acid currently available.

**VITAMIN K2 and VITAMIN D3** - provide important bone and circulatory system health benefits relevant to athletes.

## Official EFSA Health Claims <sup>(2)</sup>

### SUGGESTED USE:

1-2 capsules daily

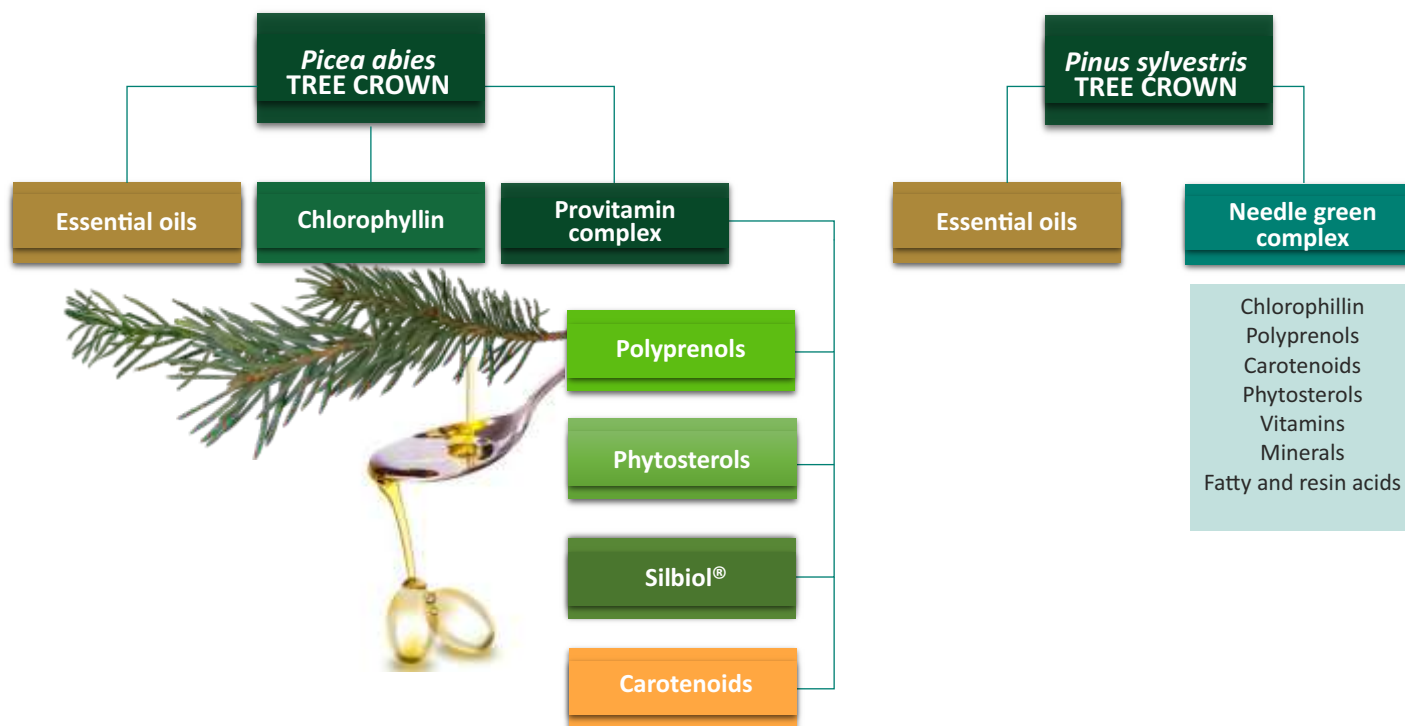
References:

1.Okai&Higashi-Okai, Int J Immunopharmacol. (1996)

2.European Food Safety Agency (2018)

# RAW MATERIALS

Nowadays the growing demand for plant origin organic raw materials is the driving force for research in the area of the complete utilisation of plant biomass, including the non-wood biomass products (NWP). The main types of NWPs in forest ecosystems are tree foliage and bark, the use of which is unfortunately quite low. All the research shows that conifer tree foliage contains virtually all organic compounds necessary for human and animal survival.



## SPRUCE AND PINE NEEDLE ESSENTIAL OILS

**RAW MATERIAL**

Liquid 10ml

**Aroma therapy**

### DESCRIPTION:

Spruce (*Picea abies*) and Pine (*Pinus sylvestris*) essential oils with their special chemical composition are known for being refreshing, invigorating and cleansing. Essential oils are mainly used in aromatherapy. The product can also be used for inhalations, especially during the cold season, for massage and sauna.

Traditionally and effectively have been used to heal wounds, treat vascular diseases, gastric ulcers, bronchitis and common cold <sup>(1)</sup>.

### EFFECTS:

Essential oils known biological effects are antibiotic, anticarcinogenic, and sedative effects during stress. Conifer essential oils and their active compounds have been scientifically studied and found to possess various bioactivities including antitumor, antiulcerogenic, anti-inflammatory, antihypertensive, antitussive, antimicrobial and central nervous system activities <sup>(2)</sup>.

### AVAILABLE FORMS:

As ready product or raw material in bulk



### References:

1. Tumen et al., Journal of Ethnopharmacology (2011)

2. Yang et al., Tetrahedron Letters (2008)

## SPRUCE PROVITAMIN COMPLEX

RAW MATERIAL



Thick paste

Microemulsion

Soft gel capsules

### DESCRIPTION:

As a purified extract of biologically active substances, the *Picea abies* lipophilic provitamin complex is suitable for a plethora of **applications in the production of food supplements, pharmacological products, functional foods, cosmetics, household chemicals, as well as feed additives.**

**VITAMIN E** is the key for strong immunity and healthy skin and eyes. In recent years, vitamin E supplements have become popular as antioxidants. These are substances that protect cells from damage.

**BETA-CAROTENE** – the human body converts beta carotene into vitamin A (retinol), thus beta carotene is a precursor of the vitamin A. We need vitamin A for healthy skin and mucus membranes, our immune system, and good eye health and vision.

**BETA-SITOSTEROL** is effective for high cholesterol reduction. Taking beta-sitosterol significantly lowers total and bad (LDL) cholesterol levels, but it does not raise good (HDL) cholesterol levels. Another beneficial effect is for men who have trouble urinating because of an enlarged prostate, or “benign prostatic hyperplasia” (BPH).

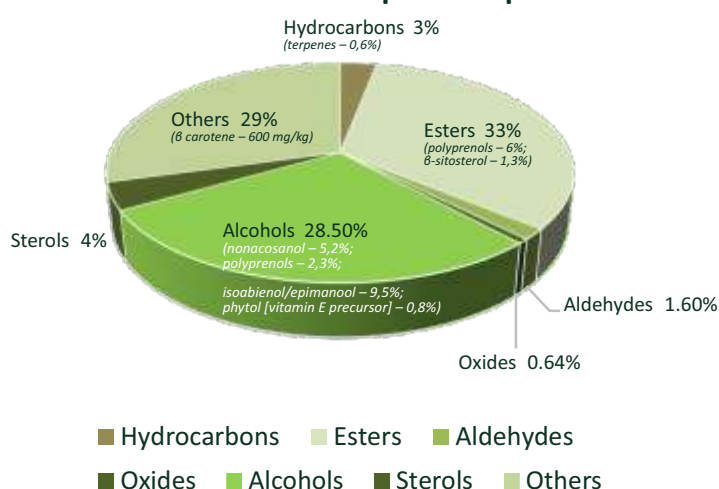
### EFFECTS:

Known provitamin complex effects:  
antioxidative  
regenerative  
anti-inflammatory  
prophylactic against various diseases

### AVAILABLE FORMS:

Thick paste  
Microemulsion  
Softgel encapsulation formulations (GMP)

### Conifer Provitamin complex composition



## PINE NEEDLE GREEN COMPLEX

RAW MATERIAL



Thick paste

Soft gel capsules

### DESCRIPTION:

PINE (*Pinus sylvestris*) NEEDLE GREEN COMPLEX is natural biologically active compound fraction that contains **polyprenols, chlorophyll, carotenoids (Vitamin A), phytol (Vitamin E), isoabienol, vitamin C, potassium, iron, magnesium, calcium, zinc and other active ingredients.**

This raw material can be used in various oral and topical formulations. The known therapeutic indications are prevention and treatment of many disorders including infectious diseases such as colds, influenza and other acute respiratory viral infections – it even has clinically reported antimicrobial action against antibiotic resistant 'super bugs' such as Strep and Staph  
reduction of the negative side effects during oncological therapies – chemotherapy, radiotherapy  
treatment of chronic diseases of the gastrointestinal tract – reflux, gastritis, gastric ulcer, IBS, Crohn's Disease etc.

### EFFECTS:

potent antioxidant  
anti-microbial  
gastrointestinal  
hepatoprotective  
immunostimulant  
cholesterol-lowering  
tissue regenerative and wound healing  
detoxifying – including drug, heavy metal and alcohol detoxification and withdrawal (interestingly, it is great for preventing hangovers)

### APPLICATIONS:

Cosmetics  
Food supplements  
Pharmaceuticals  
All liquid forms (syrup, spray)  
Soft gelatine capsules

### AVAILABLE FORMS:

Paste  
Soft gel capsules

## DESCRIPTION:

«Silbiol» is a trade name of biologically active complex of extractives obtained from spruce (*Picea abies*) needles. The principle biologically active compound of "Silbiol" is epimanol. "Silbiol" is very safe (LD<sub>50</sub> in mice is 10,5 - 14,0 mg/kg), practically does not irritate the mucous membranes and has no skin irritating or sensibilizing action.

## EFFECTS:

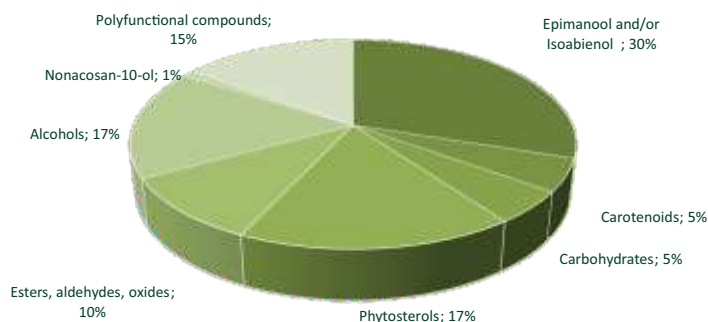
When tested for **antiviral activity** (Institute of Microbiology, Riga Stradins University) on virus influenza (A), influenza (B/Tokio/7/66) and rhinovirus (HRV-13), "Silbiol" (in concentration of 100 mg/kg) suppresses reproduction of all the above mentioned virus types.

Apart from that, an intranasal "Silbiol" ointment has shown good **antibacterial activity** against *Staphylococcus aureus* 209 R (penicillin potassium salt like), *Bac. subtilis* ATSS 6633 (Bleomycinum like) and good **antifungal activity** against *Candida albicans* (Nistatinum like), but no activity has been determined against the Gram-negative bacteria <sup>(1)</sup>.

## References:

1. Siksna et al., Medicinos teorija in praktika (2012)

## Silbiol® composition



## AVAILABLE FORMS:

Paste  
Microemulsion

## APPLICATIONS:

Cosmetics  
Food supplements  
Pharmaceuticals  
All liquid forms (syrup, spray)  
Soft gelatine capsules

## POLYPRENOLS

## RAW MATERIAL

## DESCRIPTION:

Polyrenols are linear polymers consisting of isoprene units, extracted from *Picea abies* and *Abies sibirica* species, and they are found in almost all living bodies.

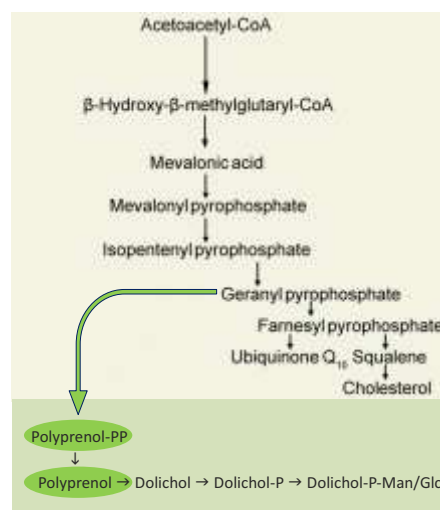
It is known that polyrenols protect cell membranes from peroxidation and from reactive oxygen species that accumulate during physical exercise as well as in the ageing process, thus **polyrenols are an excellent raw material for preparation of antioxidative and sport's food supplements, as well as anti-aging and cosmetics formulations.**

It is very safe when used as functional food ingredient or adjunctive preparation in combination with standard medical therapies for various diseases such as hepatitis B.

## EFFECTS:

## Known Polyrenol effects:

hepatoprotective - protects liver cells from toxic substances, accelerates tissue regeneration<sup>(1)</sup>  
antioxidative - protects lipid membranes from free radicals  
neuroprotective - application potential for the treatment of Alzheimer's disease  
during *in vivo* and clinical testing polyrenols have shown a positive tendency to increase muscle strength by reducing statin-induced myopathy<sup>(2)</sup>.



Endogenous polyrenols are synthesised by the **mevalonate pathway**, and the pathway's beginning coincides with that of cholesterol synthesis.

## AVAILABLE FORMS:

Purified extract 80-98% polyrenols  
Liposomal formulations (vesicle size ~1,36 mcm)  
Polyrenol nanoemulsion  
Softgel encapsulation formulations (GMP)

## References:

1. Wang et al., Age 36.4 (2014)  
2. Latkovskis et al., Medicina (2016)



# Royal Swiss Medicine

[ivars@royalsswissmedicine.com](mailto:ivars@royalsswissmedicine.com)

[www.royalsswissmedicine.com](http://www.royalsswissmedicine.com)



## SilvExpo

Alberta street 12-2,  
Riga, LV-1010 , LATVIA

[info@silvexpo.lv](mailto:info@silvexpo.lv)

[www.silvexpo.lv](http://www.silvexpo.lv)